



Windows 8 Software Installation - Quick Start Guide

This guide is the installation procedure for Windows 8, should this not be your preferred OS then you can find other guides in the Manual folder on the supplied disk.

PC Hardware requirements

Thank you for purchasing and using **GTrek**, in order to use the **GTrek** software your PC should comply with the minimum hardware description below.

PC Requirements	
Minimum Requirements	Recommended Requirements
Windows XP-SP3, Vista, Win 7 or Win 8	Windows XP-SP3, Vista, Win 7 or Win 8
Pentium 4, 1.6Ghz	Pentium 4, 2.4Ghz or AMD 2400xp+
512MB RAM (1MB for Vista or Win 7)	1GB RAM for XP, 2GB RAM for Vista, Win 7 or Win 8
100MB Disk space	500MB Disk space
3D Compatible video card	Internet access, DSL 512MB (For Google Earth/Maps only)
1024,768 16 bit colour display	3D Compatible video card, Direct X v9.C
	1200x800 (or bigger) 24 bit colour display

Your **GTrek II** kit will contain the following:-

- | | | | |
|---|-----------------------------------|---|--|
| 1 | GTrek II GPS data logger | 2 | USB to mini-USB cable |
| 3 | DC car cigarette lighter adapter | 4 | Li-ion rechargeable battery |
| 5 | Installation CD | 6 | Quick Start guide |
| 7 | Universal main charger (optional) | 8 | Spare Li-ion rechargeable battery (optional) |

Install software prior to connecting your GTrek

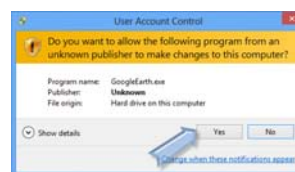
Prior to connecting your **GTrek** to your PC you are required to install the application software and device drivers. Part of the installation requires files to be downloaded from the internet so an internet connection is required.

The installation is a simple automated process and should proceed as follows:-

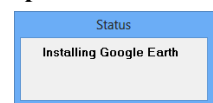
1. Inserting the installation disk into your CD-ROM drive the installation program should run automatically. If not, open "My Computer" and double click **startup.exe** on the installation CD.
2. Google Earth is a required component for the **GTrek** application, If already installed this step will be skipped. If not then after a short search it will be installed and a popup box will be displayed and Google earth will be installed.
3. Should you receive and User Account Control queries then Click Yes. Once installed the remainder of the installation files are prepared and the Welcome screen is displayed.
4. The **GTrek End User License Agreement** is displayed next and the user needs to click **I Agree** and **Next** to continue. I should recommend that this License Agreement be read but I can't force you.
5. **GTrek** is normally installed in the default folder, it can be changed if necessary, the default folder is recommended. Click **Next** to continue.
6. Confirm Installation details, Click **Install** to continue.



Step 1



Step 3a



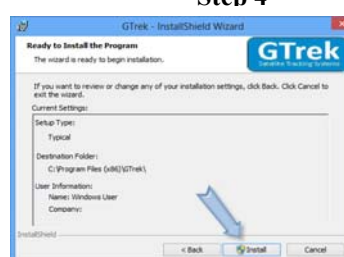
Step 2



Step 4



Step 3b



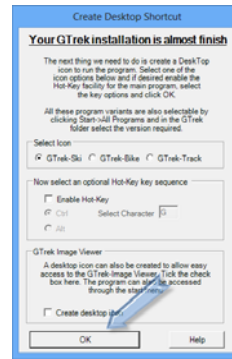
Step 5



Step 6

7. **GTrek** will now commence the installation. A progress bar will be displayed. Click Finish to complete the installation of the software.

8. The next step is to assign the desk top icon for the selected **GTrek** version. Click the selected radio button either Ski, Bike or Track. To enable a hot-key combination check the box and select a key combination. If you would like a Gtrek-Image Viewer icon on the desktop then click the check box. Click OK to continue.



Step 8

9. The last step is to configure the device drivers. Insert the battery into your **GTrek** aligning the battery terminals with the contacts, replace the cover and connect your **GTrek** to the PC with the mini USB cable supplied and set the power switch to the LOG position. Windows will recognize a new USB device and will search for suitable device drivers. If none are located then that search will extend to the internet. When complete this screen will automatically close. If no internet is available then this process can be done later when an internet connection is available, in which case click Cancel. Now run the **GTrek** application with the **GTrek** still connected and switched on to complete the configuration process. If this is not done now then some featured may not be available until it is done.



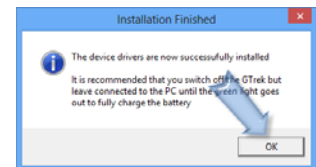
Step 7

10. A message will be displayed stating that New Hardware has been detected and that is being installed successfully. Click OK to continue. It is recommended that the **GTrek** be switched off but left connected to charge the battery. A green steady light indicates charging.

11. A group of Icons will be installed on the desktop. The first two Google OpenGL and Google DirectX can be removed. Also you may wish to remove some of the **GTrek** icons. Proceed as follows, right click on the icon to be removed and select Unpin from Start. The Icon will disappear, it's not deleted it's just removed from the desktop.



Step 9

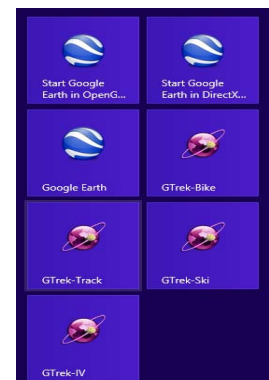


Step 10

It is recommended that prior to first use, your **GTrek** be configured and initialised. Switch on your **GTrek** and allow it to synchronise with the satellites. Launch the **GTrek** application by double clicking the icon. From the Settings menu select Configure **GTrek**, select the required logging rate and click **Save**. Your **GTrek** will be configured for use and the on-board memory will be cleared.

You will also see an Identification dialog box where your serial number is displayed where you can enter a user name (recommended).

The battery should be fully charged before use, the green light will go out or start to flicker to indicate the charging process is complete. Your **GTrek** is now ready to go. Use your **GTrek** and get familiar with it before you get to the slopes or hills or just about anywhere else.



Step 11

For more information on installation and usage please refer to the **GTrek** manual on the installation CD.

For PCs that do not have a CD Drive or a CD Drive suitable for 8cm disks, copy the entire contents (approximately 170MB) to a memory stick on another PC and install from here, just double click **startup** to start the installation. If this is not possible you can request a full size disk.

If the charge in the **GTrek** battery becomes very low then recharge before attempting to clear or initialize the on-board memory. If your **GTrek** is stored for long periods of non-use then remove the battery and store in a cool dry place. Recharge every 3 to 4 months. Do not allow the contacts to get damp or let the battery become completely discharged as recharging may not be possible. If the battery in the **GTrek** becomes fully discharged it may not be possible to recharge it.